



MONTHLY MEMBERSHIP PROGRESS REPORT

District 19 E

Results as of: 05/31/2018

GMT: HOWARD HUDSON

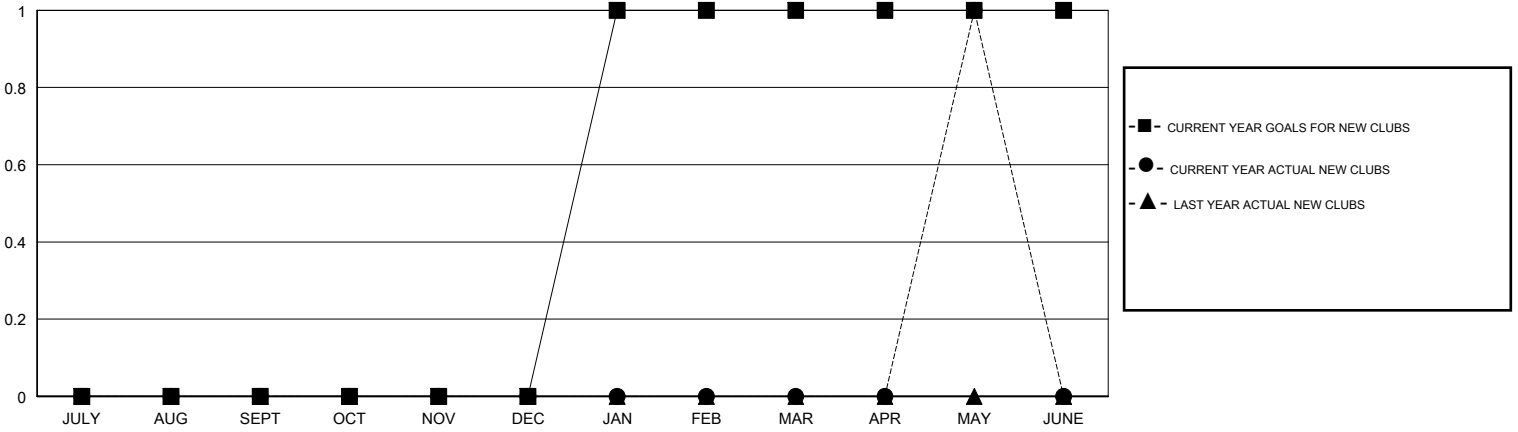
LOCATION WASHINGTON

GMT CA

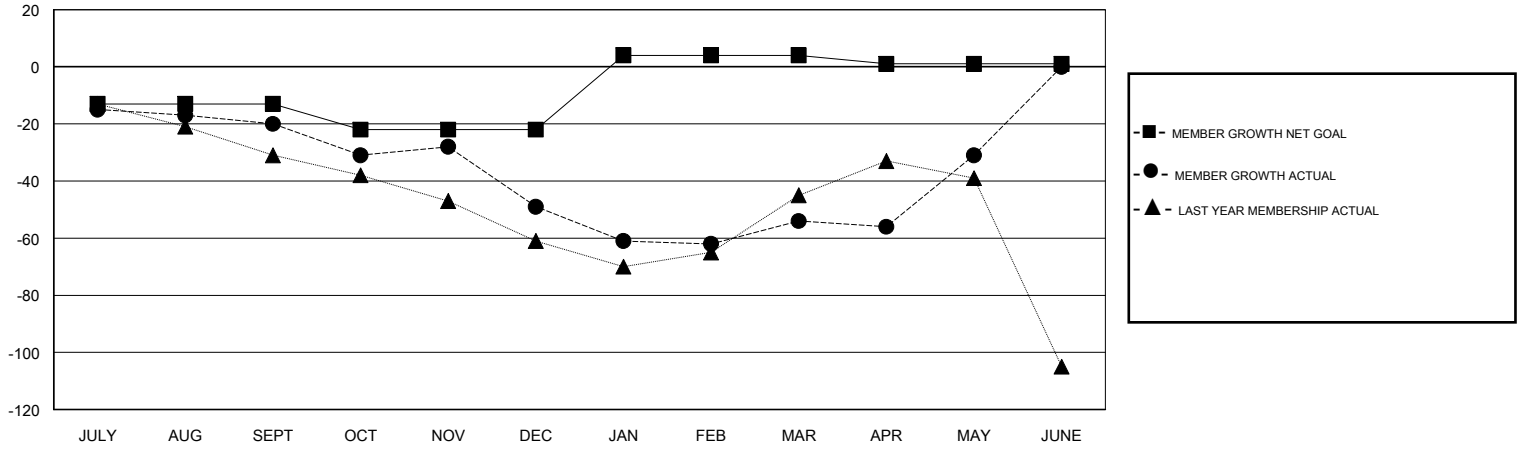
Clubs			
RESULTS FOR 2017-2018			
QUARTER	NEW CLUB GOAL	NEW CLUBS	DROPPED CLUBS
JULY/AUG/SEPT	0	0	0
OCT/NOV/DEC	0	0	1
JAN/FEB/MAR	1	0	0
APR/MAY/JUNE	0	1	0

Members			
RESULTS FOR 2017-2018			
QUARTER	MEMBER GROWTH NET GOAL	MEMBER GROWTH ACTUAL	DROPPED MEMBERS ACTUAL (including transfers)
JULY/AUG/SEPT	-13	43	56
OCT/NOV/DEC	-9	42	69
JAN/FEB/MAR	26	52	49
APR/MAY/JUNE	-3	50	22

GOALS AND ACTUAL NEW CLUBS CUMULATIVE



GOALS AND ACTUAL MEMBERS CUMULATIVE



DROPPED CLUBS: 1	37 CLUBS OF 51 ADDED 1 OR MORE NEW MEMBERS	<u>GENDER DISTRIBUTION</u>	
DROPPED MEMBERS		MALE	870 (63.64%)
DECEASED	17	FEMALE	497 (36.36%)
CLUB CANCELLED	7	Women Percentage Fiscal Year Goal: 35%	
OTHER	172	TOTAL FAMILY UNIT MEMBERS	389
TOTAL	196	FAMILY MEMBERS PAYING HALF DUES	199

[CLICK HERE FOR CUMULATIVE MEMBERSHIP DATA](#)